

Gender Inequality

Safety and Health

The 2017 Gender Attitudes Survey tested attitudes around gender roles – at home, at school, at work and in the community. New Zealanders were most likely to say that women and gender diverse people are losing out. Let's take a look at what they said, in their own words:

66%

agree women should have the right to choose whether she has an abortion



"We have still not got the right to choose an abortion as a legal option without proving it would be mentally damaging."

"Trans women don't have good access to gender reassignment surgery and medical care."

All my doctor's notes say the wrong gender!



22%

believe specific groups of women, including trans women, are disadvantaged by gender inequality

"A large number of women suffer from anxiety and depression today because society forces them to make so many choices."



53%

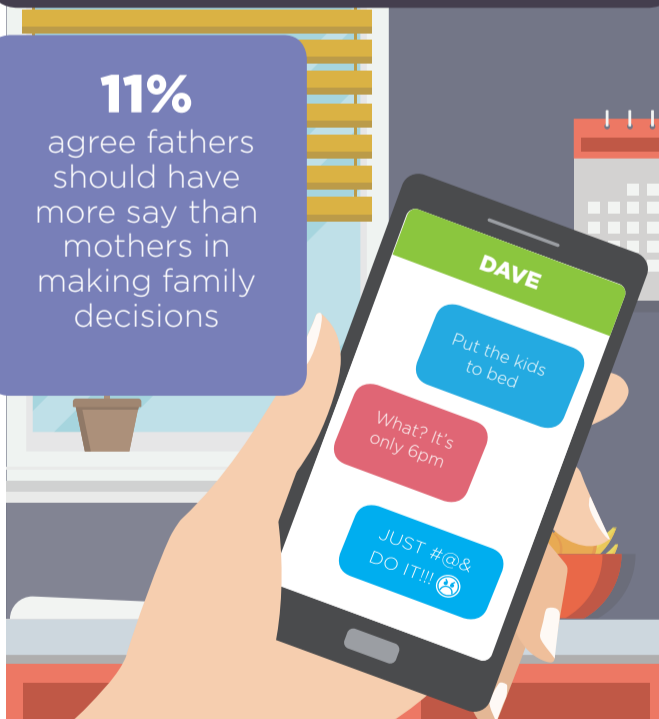
agree women feel pressured to choose between being a good wife/mother or having a professional career

"Women also live with the spectre of violence in the home or out of it -abuse - physical or sexual and rape or assault."

"Women are more likely to be objectified and sexualised in the media and everyday life than men."

11%

agree fathers should have more say than mothers in making family decisions



15%

agree if someone is raped when they're drunk, they're at least partly responsible for what happens



GROUP CHAT

OMG! Have you seen the new health strategy for ALL women?! ❤️❤️

Gender Equal NZ wants all New Zealanders to have the freedom to determine their own future – free of gender stereotypes and constraints.

This infographic shows what New Zealanders said and thought about gender roles in *Safety and Health* in New Zealand.

Research NZ completed the survey of a nationally representative group of 1251 New Zealanders in terms of age, ethnicity, gender and region.

You can view all the infographics about the Four Key Areas of Inequality and find out more about the Gender Attitudes Survey at www.genderequal.nz

Gender Equal NZ is led by the National Council of Women of New Zealand.



National Council of Women of New Zealand
Te Kaunihera Wahine o Aotearoa